



Special thanks to the College of Mount Saint Vincent for hosting this festival for the 5th year in a row!

Additions and corrections to the program:

The following notes about three of our entertainers arrived too late for inclusion on page 9 of the program:

BAY BRYAN

Bay Bryan hails from the foothills of the Rocky Mountains and now lives in New York City. He has performed his unique brand of Americana folk in venues worldwide.

ROB SCHIFFMANN

As the lead singer, writer and guitarist for his band The Hillary Step, Rob has co-produced 2 CDs and is currently working on a new EP. About Rob, *Time Out* magazine says, "Every Song is One of a Kind."

STEVE OATES

Acoustic Beat describes Steve's music as "Dazzling fingerpicked renditions of contemporary, jazz & pop tunes."

Participants left off or listed incorrectly on page 13:

Cynthia Hall, Artist; Venture Photography, Artist; Magokoro New York, Craft Vendor; Simply Silk...Wearable Art by Jeanette Ornstein, Craft Vendor; Navila Natural Soap, Craft Vendor; NY Dosa, Food Vendor

Participants left off page 16:

Affinity Health Care and Citibank, Local Business Corner

The listing of camera shy volunteers on page 18 included ANNE POUCH, but dropped her title, Webmaster.

Two of our sponsors were not on the list of supporters on page 20:

JACK C. BENDHEIM and BOB BENDER

The RIVERDALE PRESS

ttta dance!

up of dedicated young dancers is
ready to strut its stuff, page B1.



Celebrating the river

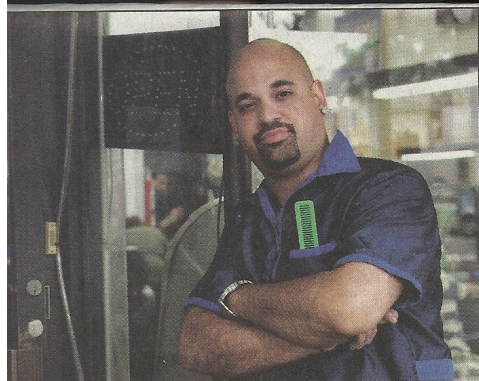
Boat rides and more are coming to the shore of
the Hudson River, op-ed and special section.



5, No. 17

Thursday, June 12, 2014


\$1.00



EVERYONE

Should Have Access to Quality Health Care.

For more information on Affinity Health Plan, please
call us at 866.247.5678 or visit AffinityPlan.org

 **Affinity Health Plan**



COMPREHENSIVE DENTAL CARE

The Century
2600 Netherland Ave., Suite 117
718.549.3910

www.comprehensive-dental.com

We Keep You Smiling!

MADLINE S. GINZBURG, D.M.D., F.A.G.D.

Shahla Asadi, D.D.S.
General Dentistry

Rashmi Ambewadikar, D.D.S.
Yasmin Kilical, D.D.S.
Practice limited to Pediatric Dentistry

Shari B. Klein, D.M.D.
Practice limited to Periodontics

Sarins Reddy, D.D.S.
Adam Pristera, D.D.S.
Practice limited to Endodontics

718.549.3910

Building wealth.

Building community.

Citibank Congratulates
RiverFest on another year celebrating
the Hudson River, and support the Bronx Link of
the Hudson Valley Greenway

citibank®

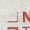
Come in to find out more about our promotions for
our loyal customers and our new customers.


5671 Riverdale Avenue

It's our way of saying thanks for
being a part of the family.

Mike Sulla
Branch Manager
(718) 884-0705
Michael.Sulla@Citi.com

Mark Angeli
Relationship Manager
(718) 822-21133
Mark.Angeli@Citi.com

 **NewYork-Presbyterian**
The Allen Hospital
5141 Broadway at 220th Street
New York, NY 10034
(212) 932-4000 or (866) NYP-ALLEN
nyp.org

 **ColumbiaDoctors**
(212) 932-5622
columbiadoctors.org/patient-care/riverdale

The Allen Hospital is pleased to provide
these services at Riverdale RiverFest

- > Information on diabetes, including a Diabetes Risk Assessment Test, an activity pyramid and information about a diabetes study at Naomi Berrie Diabetes Center at Columbia University Medical Center
- > Information about an Exercise Research Study at Columbia University Medical Center, which includes a free gym membership at the YMCA for participants
- > Nutrition information for new and prospective moms and parent-child activity(ies) with prizes
- > Current general wellness & nutrition information
- > And, of course, give-aways

**Program Corrections
on the reverse side.**